


 4 bedrooms 3 bathrooms Double Garage 203.59 Sq M

BRISA ONE DOUBLE GARAGE

The property features everything you need for comfortable living. Interior spaces have been carefully planned to maximize living space, Whilst connecting seamlessly to the outdoors.

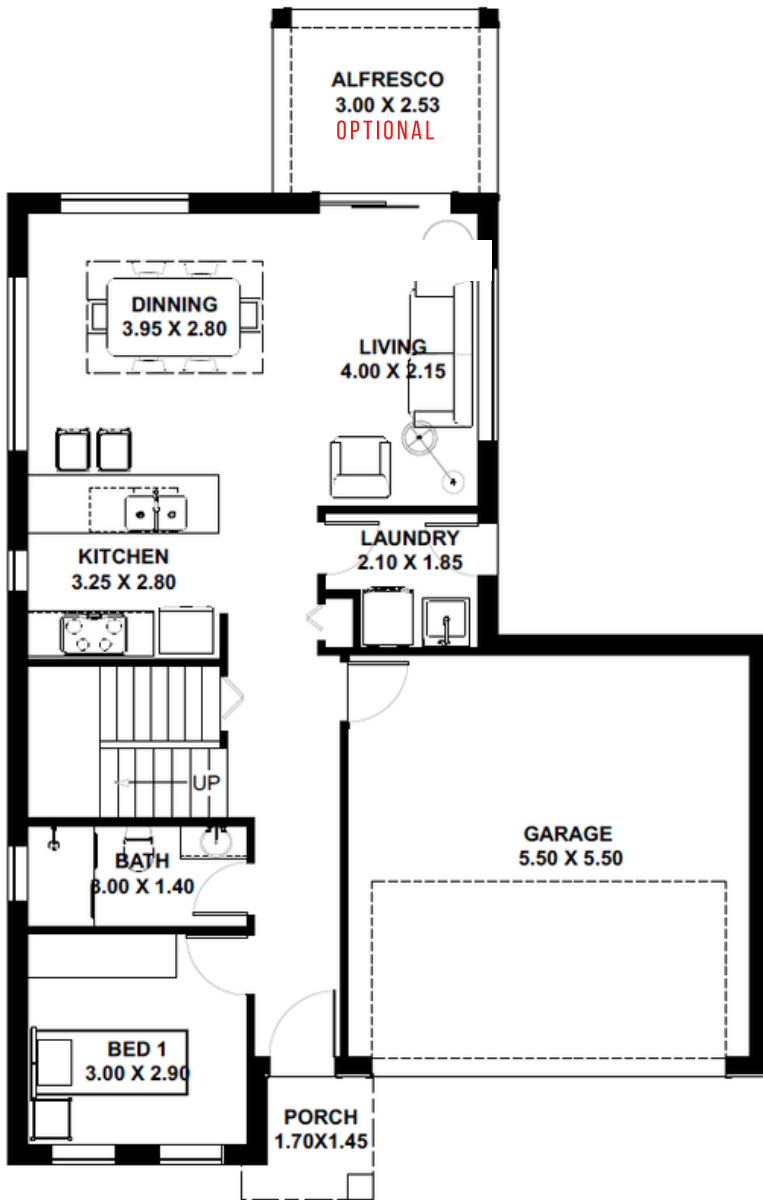


KEY FACTS

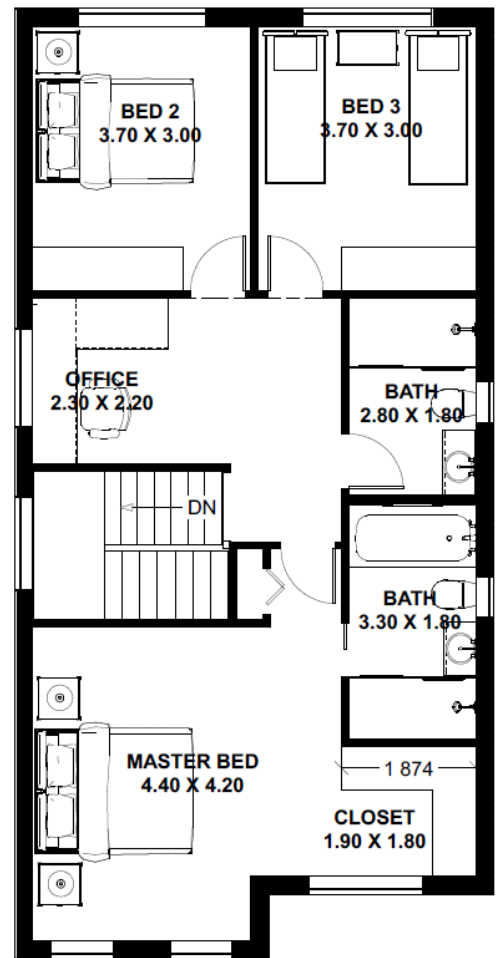
- ✓ Double storey
- ✓ 4 bedrooms
- ✓ 3 bathrooms
- ✓ Double Garage
- ✓ 203.59 Sq M
- ✓ Exterior width 10.36m
- ✓ Exterior length 13.20m

FLOOR AREAS

Ground Floor	110.25 sqm
First Floor	85.75 sqm
Alfresco	7.59 sqm
Total Floor Area	203.59 sqm



Ground floor



First floor

